



IN SERVICE EUROPEAN PROGRAMME

**Reykjavík, Iceland
19th – 25th March, 2017**



Promoting Intercultural Learning
and the European Dimension in
Education

Background

“from teachers to teachers”

- Work developed in 1992 as a consequence of a partnership between the Western Education and Library Board of Northern Ireland and Andalucía Government (Spain)
- Officially Established in Jaén (Spain) on 27th January 1999 as a independent organization
- Organization of international courses, educational visits, seminars, etc., based on the European Dimension in Education
- Co-operation and research with Universities and Training bodies in Europe
- Always listening to teachers' professional development needs

English Matters

- Co-operation with:
 - Universities of Jaén & Granada & Málaga, Spain
 - University of Limerick, Ireland
 - Trinity College Dublin, Ireland
 - Museumspädagogische Werkstatt Schloß Obernzenn. Germany
 - Jakomäki koulu. Helsinki. Finland
 - Kvennaskólinn í Reykjavík. Reykjavík. Iceland
 - Fridegårdsgymnasiet. Håbo. Sweden
 - Hendek Public Training Centre. Hendek. Turkey
 - Young Teachers' SIG. Narva. Estonia
 - Verein zur Förderung multikultureller Kommunikation – Österreich. Graz. Austria
 - Malpas School. Newport. Wales. UK
 - Teaching and Learning Challenges Ltd., former Yorkshire and Humber Development Consortium (YHDC). Bradford (England)
 - Instituto de Desenvolvimento Social. Lisboa. Portugal
 - Etc.

English Matters' Programmes



Erasmus+

Experts in courses
for Teachers

PRIMARY
SECONDARY
CLIL
STAFF



Summer School



Families: English programmes
for all family members.

Young Students

all levels
A1, A2, B1, B2, C1, C2
From 13 to 17

Adults

all levels
A1, A2, B1, B2, C1, C2
Intensive & General
Cambridge preparation course
Business & Professional
University IELTS



Erasmus+ Course for
Teachers

English Language
Courses

Erasmus+ Programmes for Teachers

Ireland: Limerick, Dublin - England - Spain



Talking to People: Inquiry-based and Cooperative Methodology.
English & Culture: Methodology of Culture for Teachers of English

Ireland

English & Culture (Methodology for teachers of English)
Exploring English & Culture (Inquiry-based Methodology)

CLIL for Teachers

Ireland – England – Spain



English and Methodology: A 21st Century Approach

Ireland – England – Spain

English for teachers with low level (TCD / IPA, Ireland)
Activate your English for teaching (TCD / IPA, Ireland)
Activate your English for teaching (Leeds, England)

English for Teachers (A2, B1)

Ireland - England

Activate your English for teaching (B1+, B2)

Ireland – England

ICT for Teaching

Ireland – England – Spain

Structured Educational Visit to Schools/Institutes & Training Seminar

Spain – Iceland – Finland – Ireland – Germany



Erasmus+

English Language Courses in England & Ireland

Junior International Summer School
Ireland - England

Junior School Trips
Ireland - England

Family Programmes
Ireland - England

General / Intensive English
Cambridge Preparation B1/B2/C1/C2
IETLS

Professional & Executive
One-to-One



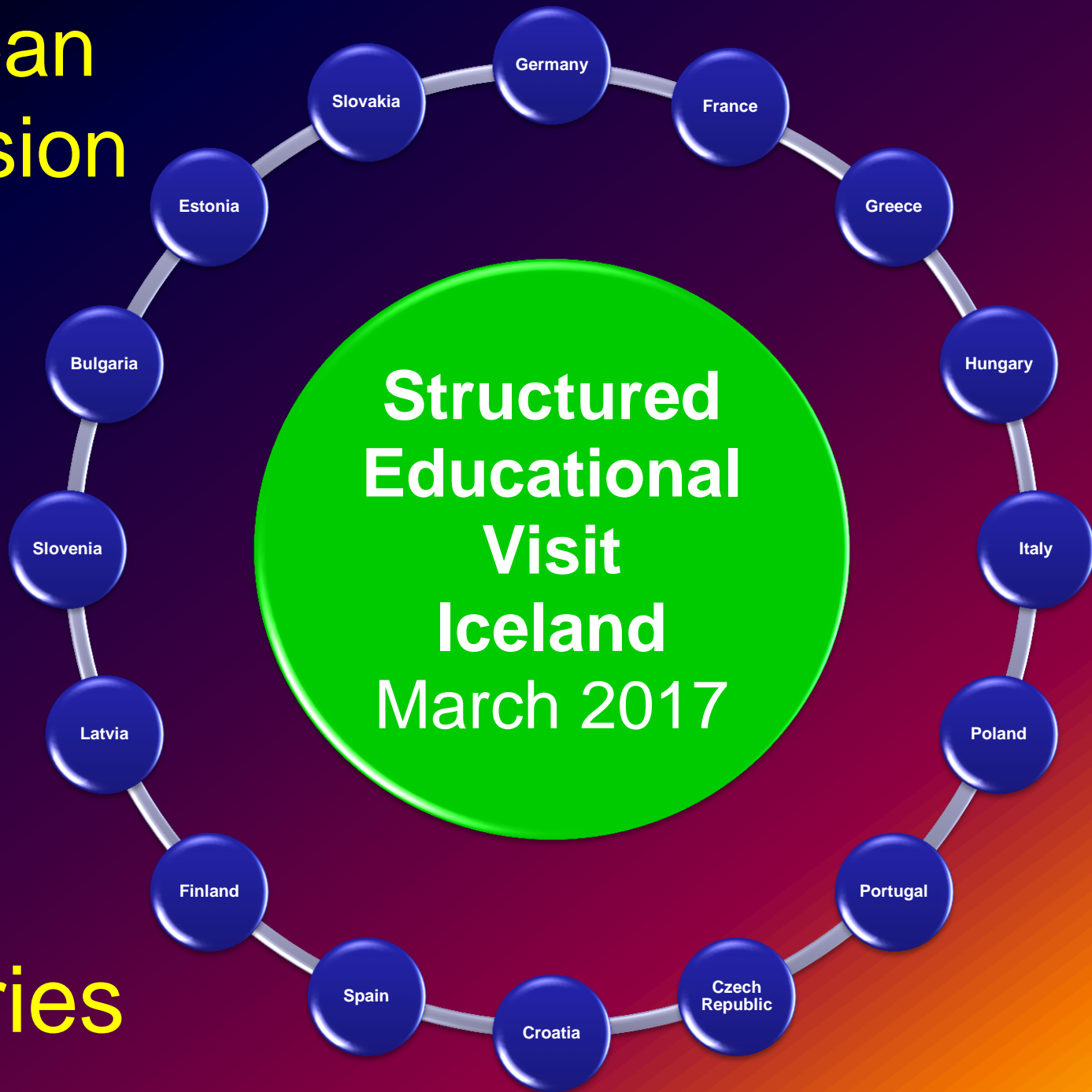


**Introduction to course:
“Structured Educational Visit to
Schools/Institutes &
Training Seminar in Iceland”**

English Matters' Approach - Key aspects of programme

European
Dimension

16+1
Countries



Key aspects of programme

- 1. European Dimension & Erasmus+ Spirit:** openness – connectedness – sharing... networking
- 2. Structured CPD Course:** combination of Seminars & Educational Visits to schools in order to get to know aspects of the Icelandic education system
- 3. Field Projects: “©ontexts4Content” Approach** to cultural, historical, geographical, geological, social... experiences
- 4. Professional Development:** Reflective journaling, Portfolio
- 5. Dissemination** of learning into teaching practice and among educational community

Key aspects of the timetable

Sunday 19/03/17	Arrival	Venue: Hotel Radisson Blue Saga (Hagatog 107). 17:00 Registration. 17:30 Introduction to Programme 18:30 Seminar I: Programme Rationale. 19:00 Introductory activity.	
	(*) 08.30/8.45 – 11.30/12.00 approx.	14.30 – 16.30	Extra
Monday 20/03/17	Venue: School of Education-University of Iceland (Stakkahlíð Street). Skriða Conf. Room. 09:00 Seminar II: Education System in Iceland 10:30 Seminar III: Icelandic history and society. 12:00-12:30 Seminar IV: Organisation of visits to schools.	Free	
Tuesday 21/03/17	08:30 Visit to school I: Please refer to individualised document “Visits to Schools in Reykjavík” for more detailed information about your visits to schools.	14.30 / 15:30 Field Project - Iceland Secrets I: Thjóðminjasafn Íslands (National Museum), Suðurgata 41.	Free
Wednesday 22/03/17	08:30 Visit to school II: Please refer to individualised document “Visits to Schools in Reykjavík” for more detailed information about your visits to schools.	13:30-18:30 approx. Field Project - Iceland Secrets II: The Bridge between Continents: ‘Leif the Lucky Bridge’ - Reykjanes Peninsula.	
Thursday 23/03/17	08:30 Visit to school III: Please refer to individualised document “Visits to Schools in Reykjavík” for more detailed information about your visits to schools.	Free	
Friday 24/03/17	08:30-18:00 approx. Field Project & Day Study Visit - Iceland Secrets III: The Golden Circle: Thingvellir, Geysir, Gullfoss.		
Saturday 25/03/17	Venue: Hotel Radisson Blue Saga (Hagatog 107). 09:00 Seminar V: Discussing dissemination strategies Presentation of Learning Portfolios EVALUATION	Departure	

CITY CENTER



- Quality Car Park
- Hotel
- Post Office
- Theatre, Opera
- Gallery
- Swimming pool
- Cemetery
- Toilets
- Church
- City Bus Terminal
- Walking and biking paths
- Main Shopping Street
- Youth Hostel
- Museum
- Library
- Parking
- Cinema
- Camping Site
- Air Terminal
- Hospital

Bus Terminal (Lækjartorg)

Bus Terminal (Hlemmur)

National Museum

School of Education, University of Iceland (Stakkahlíð)

- Tourist Information
- Hotel
- Post Office
- Theatre, Opera
- Gallery
- Swimming pool
- Cemetery
- Toilets
- Church

- Quality Car Park
- Youth Hostel
- Museum
- Library
- Parking
- Cinema
- Camping Site
- Air Terminal
- Hospital

- City Bus Terminal
- Walking and biking paths
- Main Shopping Street
- 1** The Official Tourist Information Center
- 2** ITM Tourist Information & Booking
- 3** Trip Tourist Information & Booking
- 4** MyReykjavik Tourist Information
- 5** Iceland on track Tourist Information
- 6** City Hall
- 7** Parliament Building
- 8** Dóm Church
- 9** Flea market

- 11** Government House
- 12** National and University Library
- 13** University of Iceland
- 16** BSÍ Coach Term. Flybus to Inter Airport
- 17** Hallgrímskirkja Church
- 18** National Hospital
- 19** Reykjavik Indoor Thermal Pool
- 34** Validator Credit Card
- 41** Pearl, Saga Museum

- 42** National Art Gallery
- 43** The Culture House
- 44** The Nordic House
- 45** Reykjavik Art Museum, Hafnarhús
- 46** Rvk. Museum of Photogr, City Library
- 47** National Museum of Iceland
- 48** Árni Magnússon Institute
- 50** ASÍ Art Gallery
- 51** Einar Jónsson Museum
- 52** Reykjavik Art Museum, Kjarvalsstaðir
- 59** Harpa Reykjavik Concert Hall

1/2 mi.

Evaluation

Internal - External

Reflective Journal

Evaluation of this programme

- Internal:
 - Reflective Journal (qualitative evaluation)
- External:
 - Final survey (quantitative & qualitative evaluation)
 - Participants' report (qualitative evaluation)
 - Training organisation's report (qualitative evaluation)
 - Evaluation criteria:
 - Participation: school visits, talks & debates, group work, etc.
 - General understanding of Education system
 - Use of Field Projects & cultural experiences for dissemination
 - Erasmus+ Spirit
 - Punctuality

Identification

Perception of personal contribution to training

7a. Your personal contribution to your training

How did you contribute to your own professional development on this course?

Perception of contribution of the training programme to CPD

EVALUATION OF THE TRAINING PROGRAMME



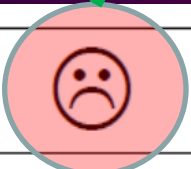

External Evaluation

TRAINING PROGRAMME:	Structured Educational Visit to Schools/Institutes & Training Seminar in SPAIN
DATE:	23 rd to 29 th October, 2016
COUNTRY:	SPAIN
WORKING LANGUAGE:	English
PARTICIPANT'S NAME:	
COUNTRY:	

7b. General opinion about the course:

Thank you
very much!

Tell us **why**, please.
Thank you!

			
<input type="checkbox"/>	<input type="checkbox"/>	<input type="checkbox"/>	<input type="checkbox"/>
<input type="checkbox"/>	<input type="checkbox"/>	<input type="checkbox"/>	<input type="checkbox"/>
<input type="checkbox"/>	<input type="checkbox"/>	<input type="checkbox"/>	<input type="checkbox"/>
<input type="checkbox"/>	<input type="checkbox"/>	<input type="checkbox"/>	<input type="checkbox"/>



www.englishmatters.org

english@englishmatters.eu



[@EnglishMattersE](https://twitter.com/EnglishMattersE)



www.facebook.com/englishmatters.org